

# Cabinet type capacitor installation

## ■ Application

Cabinet type HV shunt capacitor installation is upgraded on the basis of original open rack type installation and it meet the relevant requirement of cabinet switchgear.

The device is mainly composed of shunt capacitor, Zinc oxide surge arrester, series reactor, vacuum contactor or circuit breaker. It is suitable for substations of 220kV and below in power plants, electric power bureaus and large factories and mines for automatically adjusting the bus voltage, compensating the reactive power, increasing the voltage pass rate and the power factor.

---

## ■ Technical Performance

1. Rated voltage: 6~35kV
2. Rated frequency: 50Hz, 60Hz
3. Capacitance tolerance: 0~5%
4. The ratio of max. capacitance to min. capacitance of three phase:  $\leq 1.02$
5. IP degree: IP3X

---

## ■ Executive Standard

IEC 60871

---

## ■ Service Condition

1. Indoor use, the altitude above sea level of mounting area does not exceed 2000m (if higher than 2000m, it is necessary to make an explanation when ordering).
2. The ambient temperature of mounting area should be  $-25^{\circ}\text{C} \sim +55^{\circ}\text{C}$  (if operating under exceptional environment, it is necessary to make an explanation when ordering).
3. Relative humidity: daily average not greater than 95%, monthly average not greater than 90%
4. There should be no conductive or explosive dust, no harmful gas and vapor, no severe mechanical vibrations in mounting area.
5. Seismic withstand level: horizontal acceleration less than 0.2g.

## ■ Product Characteristic

### 1. Fine compensation performance

The installation is combined of several groups with equal or unequal capacity, one control unit for each group, maximum 12 control units, the output reactive power could be controlled flexibly to achieve fine compensation.

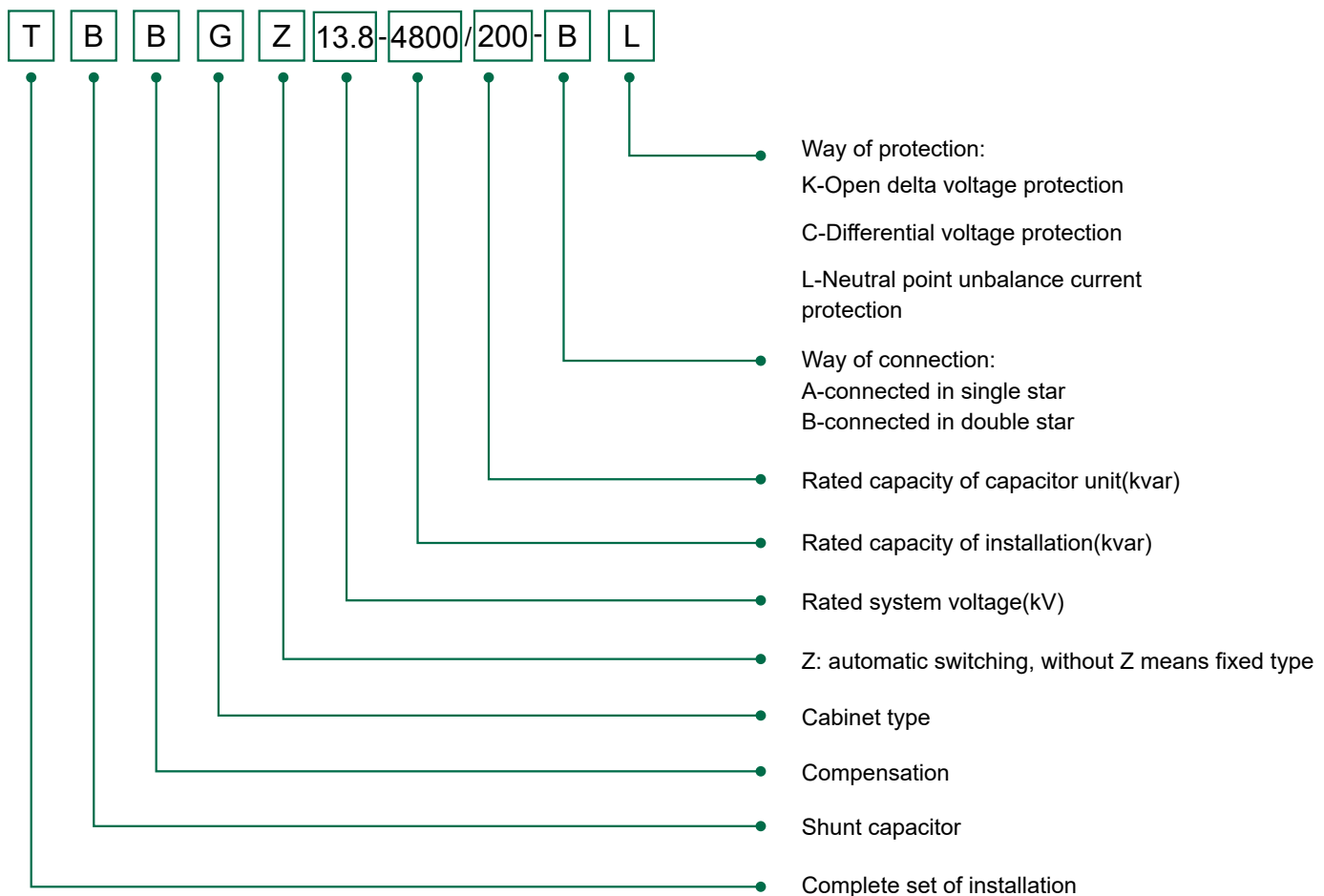
### 2. Complete communication function

RS232, RS485 and IEC61850 serial communication ports, it could meet the multiple management modes requirement such as unattended operation, centralized control by communicating with other monitoring device in the substation to form the substation integrated automation system.

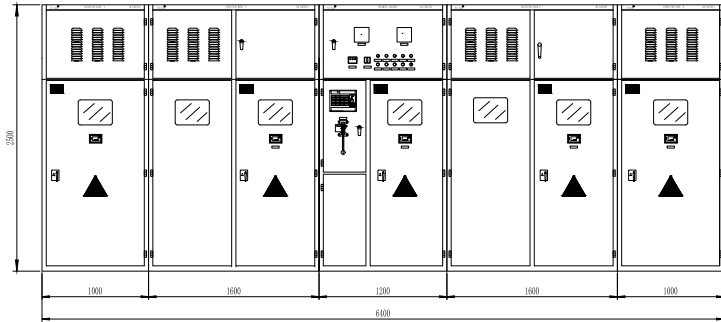
### 3. Safe and reliable

The installation has over temperature, over voltage alarm protection and internal fault blocking function. It also has the good five-protection interlock performance, the incoming disconnecter and the cabinet door can't be opened during the operation, thus ensure the personal safety.

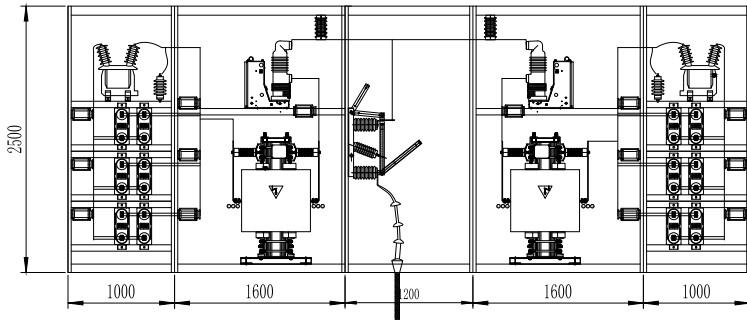
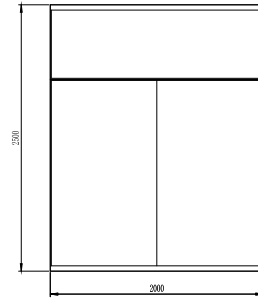
## ■ Model and explanation



Front view



Side view



All dimensions in mm

